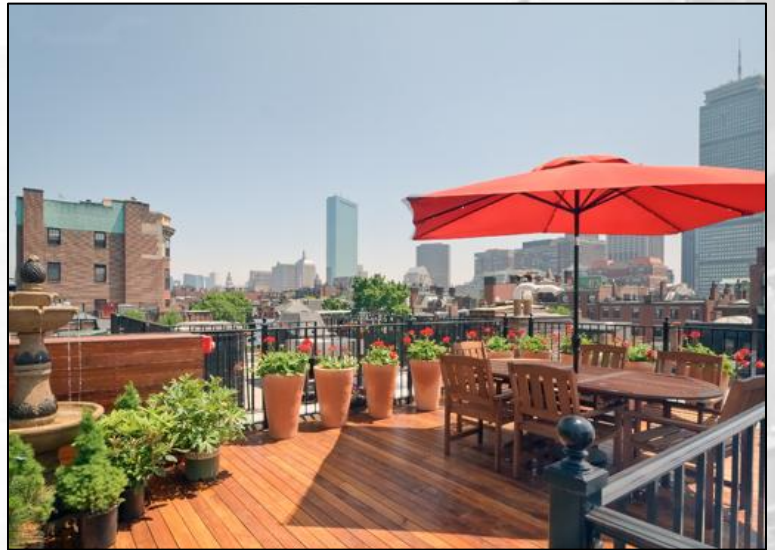


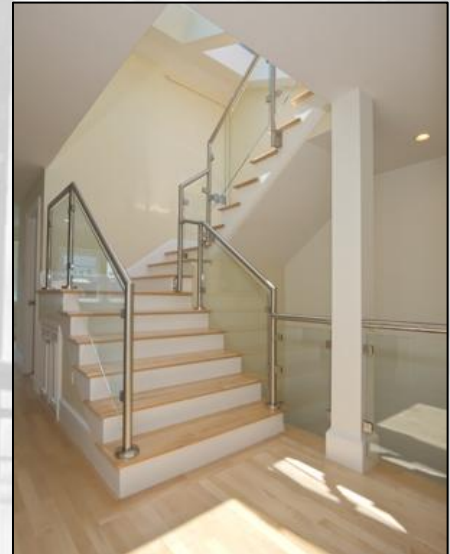
## *The Penthouse:*

# **349 Marlborough Street Residence #4**

- *Dramatic Penthouse duplex with entry on 2<sup>nd</sup> floor landing*
- *Home occupies rear of 3<sup>rd</sup> floor and floor-through of 4<sup>th</sup> floor*
- *2 bedrooms with en-suite marble baths*
- *Additional half-bath*
- *Open kitchen/living floor plan with marble gas fireplace.*
- *Designer kitchen with Statuary marble counters, soft-close drawers, Sub-Zero refrigerator, Bosch microwave, range, and dishwasher, and Danby wine refrigerator*



- *Contemporary metal and glass staircase with water element*
- *Luxury private roof deck*
- *Direct access to 2 car tandem parking*



### Unit Info

*Description: 2 bed/2.5 baths*  
*Approximate sq footage: 1390*  
*Estimated condo fee: \$504*  
*Parking: Two car tandem*

Offered at  
**\$1,495,000**

*The Charles Realty*  
257 Newbury St. Boston, MA 02116  
(617) 236-0353